

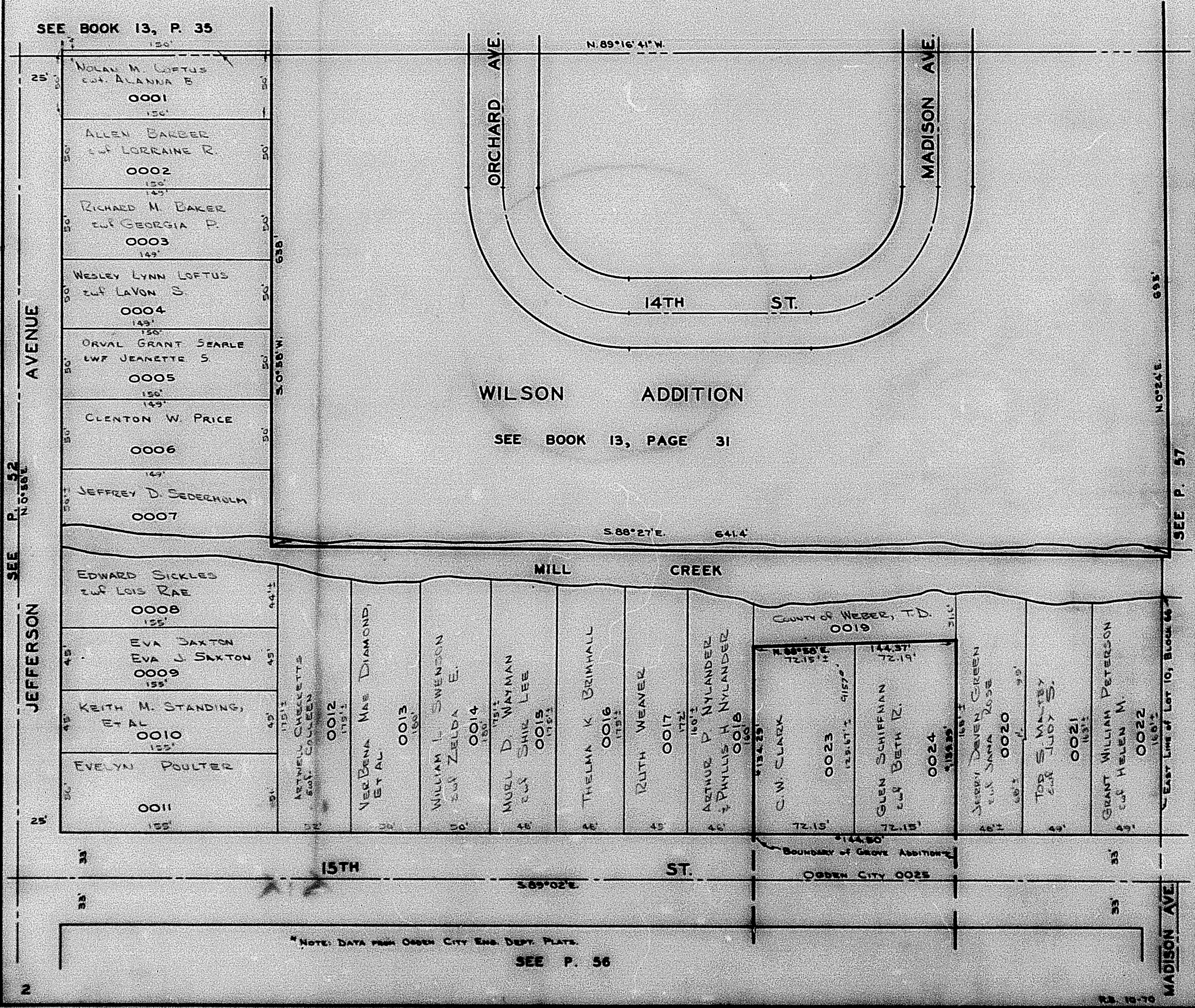
PART OF LOT 10, BLOCK 66 PLAT C & PART OF GROVE ADDITION

55

TAXING UNIT: 25

IN OGDEN CITY
SCALE 1" = 50'

PREFIX: 02-055



SEE BOOK 13, P. 35

ORCHARD AVE.

N. 89°16'41" W.

MADISON AVE.

14TH ST.

WILSON ADDITION

SEE BOOK 13, PAGE 31

S. 88°27' E. 641.4

MILL CREEK

COUNTY OF WEBER, T.D.
0019

15TH ST.

ST.

Boundary of Grove Addition
OGDEN CITY 0025

NOTE: DATA FROM OGDEN CITY ENG. DEPT. PLATS.

SEE P. 56

693'

SEE P. 57

MADISON AVE

RS. 10-70